



Round expander  
remote valve



Crescent expander  
integrated valve



Square expander  
remote valve



Rectangular Expander  
integrated valve



## Tissue Expanders®

POLYsmooth™ | POLYtxt®

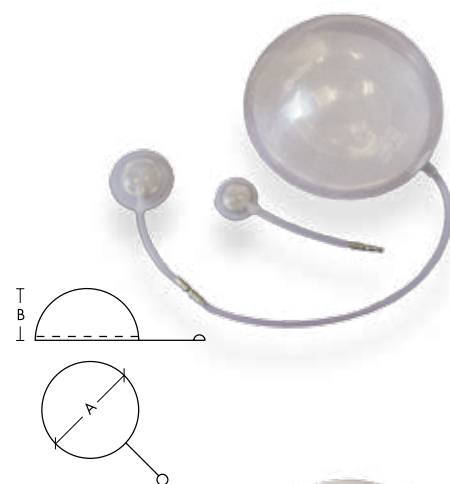
Silicone-shell tissue expanders  
with smooth or textured surface and  
a remote or integrated valve

Implants made by POLYTECH – QUALITY made in Germany

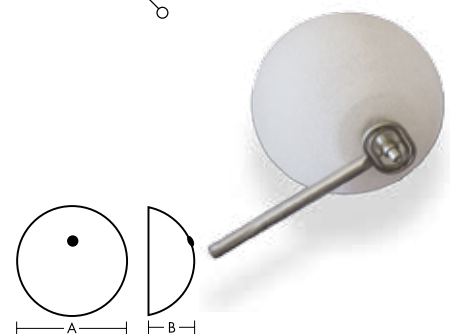


# Tissue Expanders CE 0483

Order no.		Dimensions (mm)		Volume (ml)
POLYsmooth™	POLYtxt®	A	B	
<b>Round, with remote valve</b>				
51627-100	41627-100	76	40	100
51627-200	41627-200	96	48	200
51627-300	41627-300	111	54	300
51627-400	41627-400	121	58	400
51627-500	41627-500	131	62	500
51627-600	41627-600	136	64	600
51627-700	41627-700	146	68	700
51627-800	41627-800	151	70	800



<b>Round, with integrated valve &amp; permanent magnet</b>				
50627-200	40627-200	96	48	200
50627-300	40627-300	111	54	300
50627-400	40627-400	121	58	400
50627-500	40627-500	131	62	500
50627-600	40627-600	136	64	600
50627-700	40627-700	146	68	700
50627-800	40627-800	151	70	800



approximate measurements

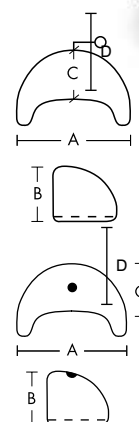
Order no.		unsterile
20738-012		



Order no.		Dimensions (mm)				Volume (ml)
POLYsmooth™	POLYtxt®	A	B	C	D	
<b>Crescent, with remote valve</b>						
51690-200	41690-200	95	45	60	70	200
51690-300	41690-300	110	60	70	85	300
51690-400	41690-400	125	65	75	95	400
51690-700	41690-700	150	75	90	115	700



<b>Crescent, with integrated valve &amp; permanent magnet</b>						
50690-200	40690-200	95	45	60	70	200
50690-300	40690-300	110	60	70	85	300
50690-400	40690-400	125	65	75	95	400
50690-700	40690-700	150	75	90	115	700



approximate measurements

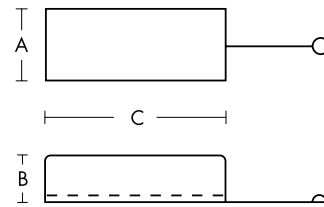
Order no.		unsterile
20738-012		



Order no.		Dimensions (mm)			Volume (ml)	
POLYsmooth™	POLYtxt®	A	B	C	min.	max.

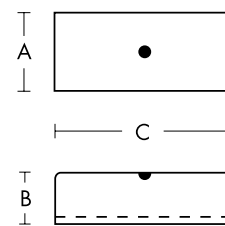
**Rectangle, with remote valve**

51680-050	41680-050	38	38	38	50	60
51680-100	41680-100	46	53	60	100	130
51680-160	41680-160	51	38	110	160	200
51680-200	41680-200	50	70	60	200	220
51680-250	41680-250	59	50	96	250	280
51680-320	41680-320	62	47	141	320	400
51680-400	41680-400	55	56	136	400	430
51680-500	41680-500	69	51	158	500	540
51680-600	41680-600	50	70	180	600	650
51680-700	41680-700	50	50	280	700	720
51680-800	41680-800	87	57	185	800	960



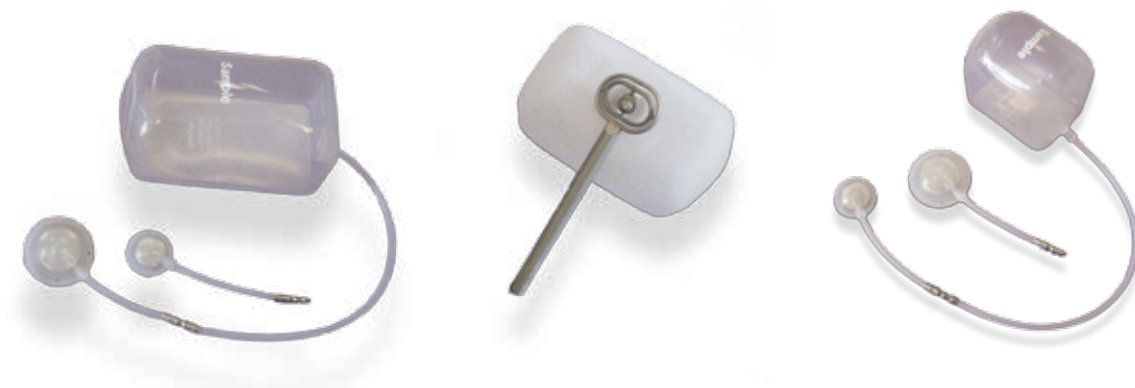
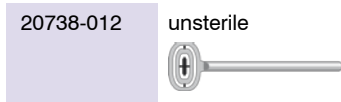
**Rectangle, with integrated valve & permanent magnet**

50680-160	40680-160	51	38	110	160	200
50680-200	40680-200	50	70	60	200	220
50680-250	40680-250	59	50	96	250	280
50680-320	40680-320	62	47	141	320	400
50680-400	40680-400	55	56	136	400	430
50680-500	40680-500	69	51	158	500	540
50680-600	40680-600	50	70	180	600	650
50680-700	40680-700	50	50	280	700	720
50680-800	40680-800	87	57	185	800	960



approximate measurements

**Magnet finder**



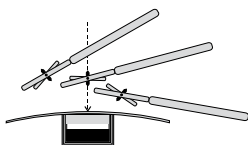
# Tissue Expanders € 0483

## Product Description

Tissue expanders are used to create transplantable tissue by expansion. Depending on the indication, tissue expanders are available in different shapes, volumes and surfaces. On the inside, all expanders are equipped with a reinforced base to increase the stability of the posterior contact area and to support the directional expansion.

## Information on Materials

The tissue expanders with integrated valve and the tissue expanders with remote valve have a shell consisting of silicone elastomer. Both are available with either the POLYsmooth™ smooth or the POLYtxt® textured surface (pore size texturing: ↓ 200–300 μm, Ø 100–400 μm). All valves dispose of a puncture barrier.



After implantation, the use of the magnet finder guarantees an easy localization of the integrated valve (Ø 20mm) equipped with a permanent magnet. The cardanic

mechanism of the indicator magnet allows for exact determination of the valve position and the correct direction of the injection.

The remote valves are connected to their tissue expanders via a tubing system variable in length and a connector. Each of these expanders is delivered with a big (Ø 17 mm) and a small (Ø 11 mm) valve. The expanders are filled through the valve with physiological (0.9%), sterile, pyrogen-free saline solution using a cannula (Ø ≤ 23G).

Production of the expanders is based on a quality management according to ISO 9001 and ISO 13485. All materials used are of implantable medical quality.

## Indications

- temporary expansion of tissue and skin, e. g. for reconstruction after ablatio mammae, after burns or after trauma-induced loss of tissue
- temporary expansion of tissue and skin to correct combined breast and thorax deformities, e. g. Poland Syndrome, Pectus excavatum

## Important Information

**ATTENTION: expanders with integrated magnets must not be implanted in patients who have pacemakers or patients who need an MRI examination during the implantation period.**

Custom-made products: expanders with specific dimensions and characteristics can be manufactured on request.

Tissue expanders are delivered individually packed and sterile.

One magnet finder is packed with each tissue expander with integrated magnetic valve. Additional magnet finders can be ordered separately. They are delivered individually packed and unsterile.

**Attention:** Please study the detailed instructions for use included with each product.



POLYTECH Health & Aesthetics GmbH

Altheimer Str. 32 • 64807 Dieburg • Germany  
☎ +49 (0) 60 71 98 63 0 • 📠 +49 (0) 60 71 98 63 30

✉ info@polytechhealth.com • www.polytech-health-aesthetics.com